

INCREMENTAL CAPACITY PROCES

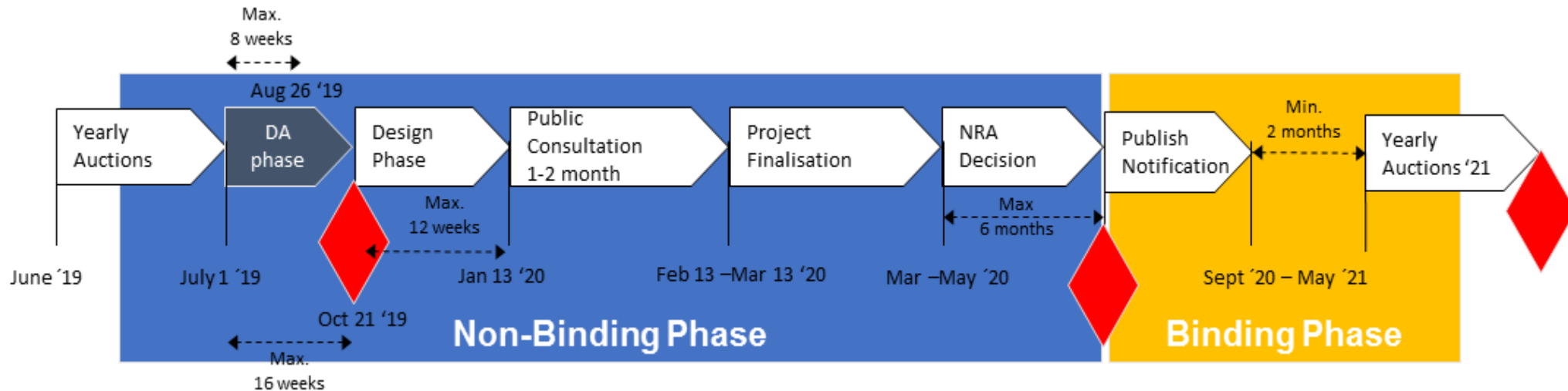
European and Danish approach

Christian Rutherford, Energinet Gas TSO

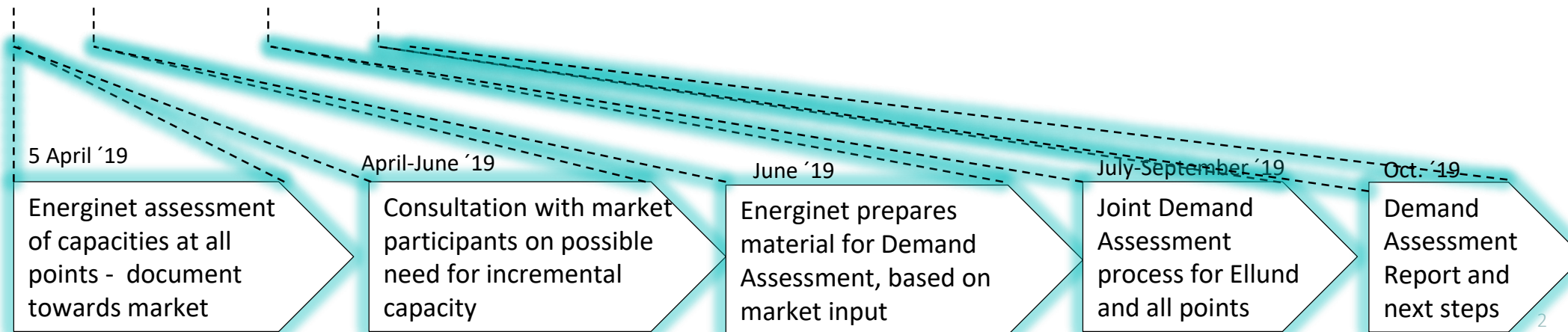
INCREMENTAL CAPACITY PROCESS - TIMELINE

European and Danish approach

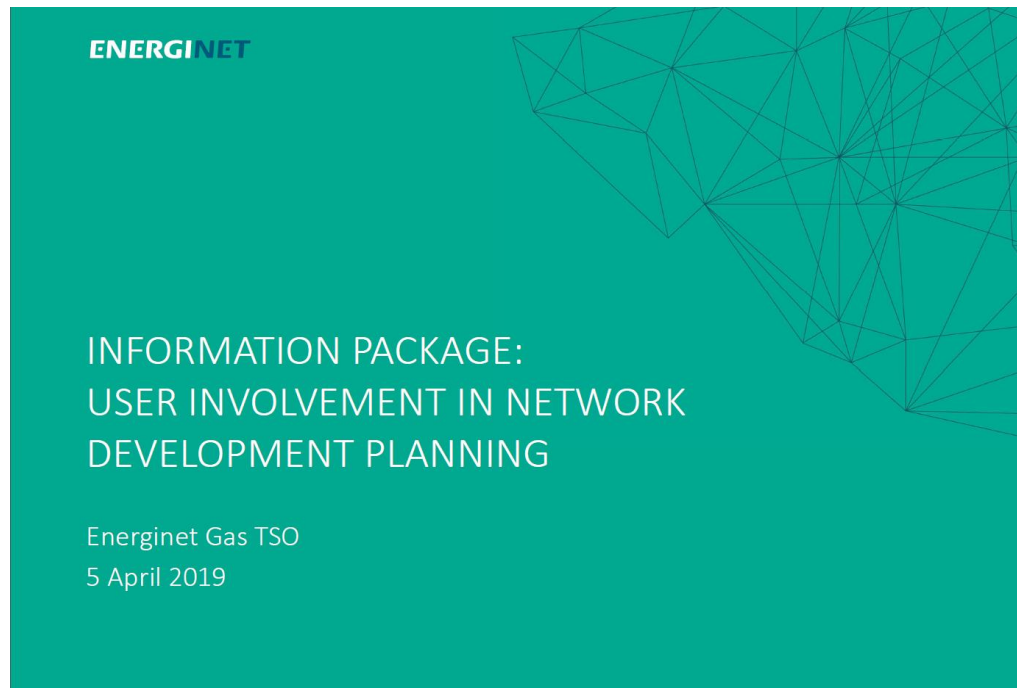
European incremental process at interconnection points (Ellund) – Together with GUD and OGE



Danish incremental process (all capacity points)



MATERIAL AND POINTS



Point	Explanation	Expected possible capacity (GWh/h)
Entry Europipe 2	Imports from Norway	13.4
Entry Nybro	Imports from Norway + Danish North Sea	20.3
Entry Faxe	Imports from Poland	3.8
Entry Ellund	Imports from Germany	7.7
Entry RES	Biomethane injection	According to socioeconomic valuation
Entry storage	Withdrawal from Danish storage	8.2
Exit Faxe	Exports to Poland	13.4
Exit Ellund	Exports to Germany	10.0
Exit storage	Injection to Danish storage	4.2

<https://en.energinet.dk/Gas/Shippers/Incremental-capacity>

INCREMENTAL CAPACITY PROSESS

Key messages

- Energinet has prepared material on capacities in the future system with Baltic Pipe, in due time for market participants to assess and comment
 - Based on capacity material, Energinet has invited market participants to comment on material, and to express non-binding needs for capacity in the future system
 - Energinet will run the internal Danish incremental process in parallel with the official process at IP Ellund
- It is important for Energinet to collect knowledge on potential future needs for incremental capacity for the whole system in due time, including Baltic Pipe, to support the market needs
- This is why we have included the new points resulting from the Baltic Pipe project at this early stage

QUESTIONS



Contact: cru@energinet.dk